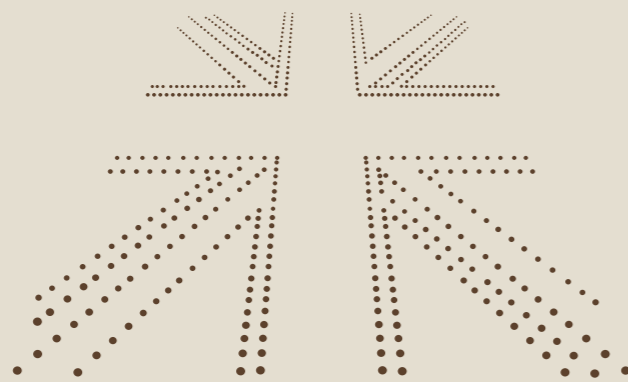




Manntree®
— Paint My Love —



Manntree®
— Paint My Love —

Manntree Paint Co., Ltd.
Tel: +44-20-32390208
Web: www.manntree.co.uk

Headquarters :
3rd Floor, No.207 Regent
street, London, United Kingdom

Design by Manntree in United Kindom



Leicester

Artistic Coatings | Leicester Cashmere
The revolutionary work of splendid finishes



Precious sheep wool.

With the Industrial Revolution, Britain has established itself as a global dominant power. From the 19th century, the wool products of British Leicester sheep have been sold all over the world, possessing the quality that is renowned all over the world.

This is a high quality wool from the wool of Leicester sheep, which is locally known as "diamond fiber" because of its extremely low yield, with an adult sheep producing only 3-5kg each time, a net wool rate of 65%-68%, a wool length of 20-25cm, and a wool fineness of 44-48 counts. If this kind of product is used in the field of paint, it must be indelible to the touch of their surface.

Leicester



TCF - 052 (50g x 2)

PLE - 052 (50g)

Manntree[®]
— Paint My Love —



We are very fond of cashmere products.

Leicester Cashmere Art Paint is a kind of silk fiber made of Leicester sheep's wool, durable and elastic, it is not set in the application of paint products, easy to work, with a hidden light silk, light brush marks, soft touch, like a cashmere scarf on the wall, comfortable and generous without losing the delicate elegance, and its unique luster is praised.

Leicester Cashmere is a water-based art paint with a soft silky sheen, bringing more layers and dynamics to living spaces and business places. The soft wool gives a warm and cozy feeling in winter, and the light silky sheen provides a crystalline coolness in summer. Now, Mantua brings this original metallic feeling to China and incorporates more British elements in the design.

Manntree[®]
— Paint My Love —



TCF - White

PLE - Based



TCF - 005 (50g)

PLE - 005 (25g)



TCF - 053 (20g)

PLE - 053 (10g)



TCF - 054 (20g)

PLE - 054 (10g)



TCF - 005 (50g x 2)

PLE - 005 (50g)



TCF - 053 (50g)

PLE - 053 (25g)



TCF - 054 (50g)

PLE - 054 (25g)



TCF - 053 (50g x 2)

PLE - 053 (50g)



TCF - 054 (50g x 2)

PLE - 054 (50g)

Leicester

Leicester Cashmere is a water-based art paint with a soft silky sheen, bringing more layers and dynamics to living spaces and business places. The soft wool gives a warm and cozy feeling in winter, and the light silky sheen provides a crystalline coolness in summer. Now, Mantua brings this original metallic feeling to China and incorporates more British elements in the design.



TCF - 002 (20g)



PLE - 002 (10g)



TCF - 002 (50g)



TCF - 004 (50g)

PLE - 004 (25g)



TCF - 004 (50g x 2)

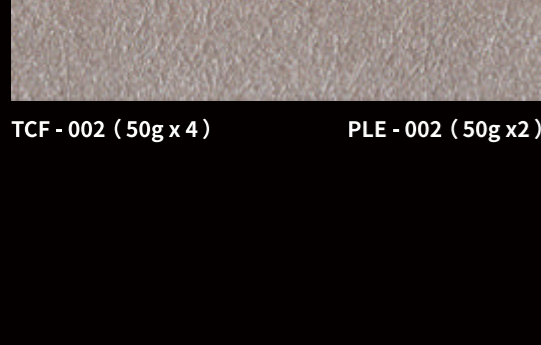
PLE - 004 (50g)



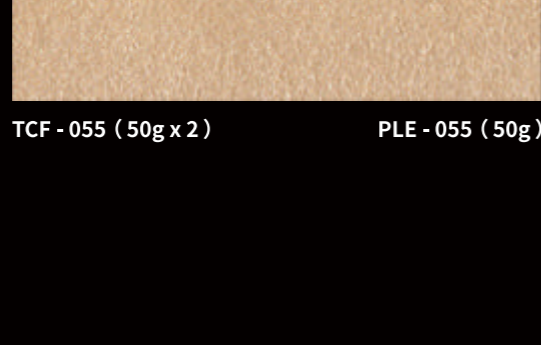
TCF - 002 (50g x 2)



PLE - 002 (50g)



TCF - 002 (50g x 4)



TCF - 055 (50g)

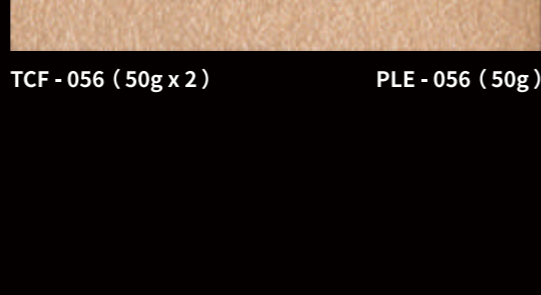
PLE - 055 (25g)



TCF - 056 (50g)

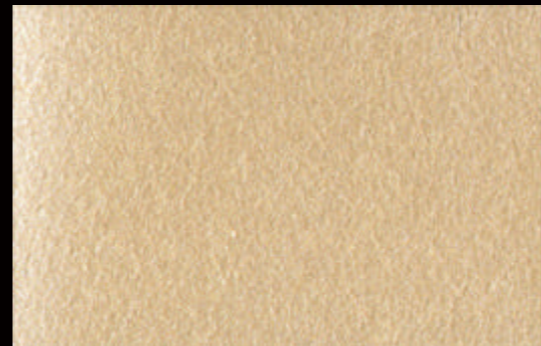


PLE - 056 (25g)



TCF - 056 (50g x 2)

PLE - 056 (50g)



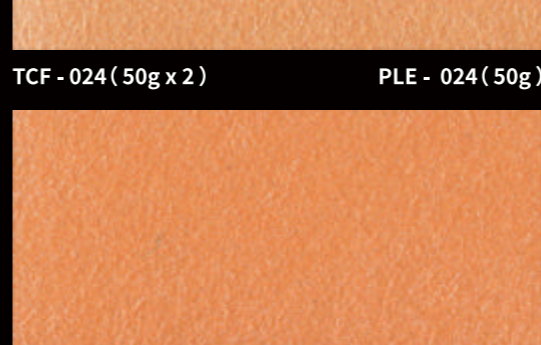
TCF - 024 (20g)



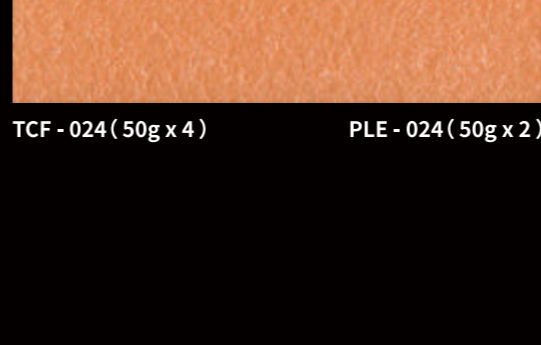
PLE - 024 (10g)



TCF - 024 (50g)



TCF - 024 (50g x 2)



PLE - 024 (50g)

TCF - 024 (50g x 4)

PLE - 024 (50g x 2)



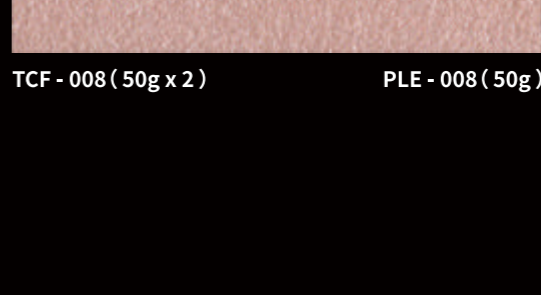
TCF - 008 (50g)



TCF - 057 (50g)

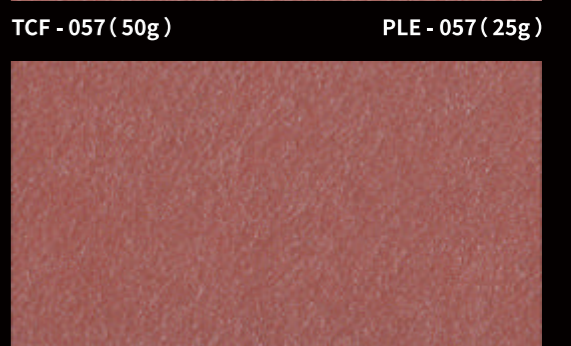


PLE - 008 (25g)



TCF - 008 (50g x 2)

PLE - 008 (50g)



TCF - 057 (50g x 2)

PLE - 057 (25g)

PLE - 057 (50g)



Artistic Coatings | Leicester Cashmere
the revolutionary work of splendid finishes.



TCF - 018 (50g)

PLE - 018 (25g)



TCF - 019 (50g)

PLE - 019 (25g)



TCF - 017 (50g x 2)

PLE - 017 (50g)



TCF - 018 (50g x 2)

PLE - 018 (50g)



TCF - 019 (50g x 2)

PLE - 019 (50g)



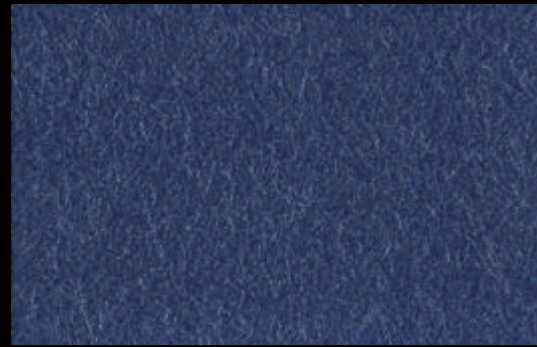
TCF - 059 (50g x 2)

PLE - 059 (50g)



TCF - 058 (50g)

PLE - 058 (25g)



TCF - 058 (50g x 2)

PLE - 058 (50g)

Leicester

Artistic Coatings | Leicester Cashmere
the revolutionary work of splendid finishes



TCF - 003 (20g)

PLE - 003 (10g)



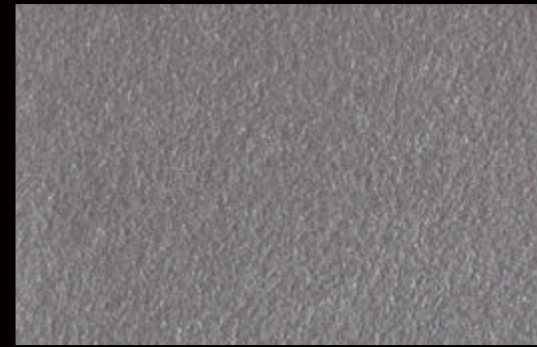
TCF - 003 (50g)

PLE - 003 (25g)



TCF - 003 (50g x 2)

PLE - 003 (50g)



TCF - 003 (50g x 4)

PLE - 003 (50g x 2)



Leicester

Artistic Coatings | Leicester Cashmere
the revolutionary work of kick-off wallpaper

Leicester

Artistic Coatings | Leicester Cashmere, the revolutionary work of splendid finishes.

Characteristics:	water based interior wall material, very suitable for traditional building materials and plastering.		
Main ingredients	Imported fleece powder, pearl powder, inorganic minerals, cellulose, Leicester sheep wool fabric	Net weight	5kg / barrel
Shelf life	12 months in dry condition at room temperature (at the time of original delivery)	Reference dosage	3.5m ² / kg

Leicester

Precious sheep wool.

With the Industrial Revolution, Britain has established itself as a global dominant power. From the 19th century, the wool products of British Leicester sheep have been sold all over the world, possessing the quality that is renowned all over the world.

This is a high quality wool from the wool of Leicester sheep, which is locally known as "diamond fiber" because of its extremely low yield, with an adult sheep producing only 3-5kg each time, a net wool rate of 65%-68%, a wool length of 20-25cm, and a wool fineness of 44-48 counts. If this kind of product is used in the field of paint, it must be indelible to the touch of their surface.

Leicester Cashmere is a water-based art paint with a soft silky sheen, bringing more layers and dynamics to living spaces and business places. The soft wool gives a warm and cozy feeling in winter, and the light silky sheen provides a crystalline coolness in summer. Now, Mantua brings this original metallic feeling to China and incorporates more British elements in the design.

Technical description

- ① Different batches of materials cannot be applied to the same wall.
- ② Different substrates will make color (possible) differences.
- ③ The material which has been mixed with water should be used up within 24 hours.
- ④ When applied to non-waterproof walls or used in washrooms, waterproof super wax must be used.

Features:

- ① High quality Leicester sheep wool, velvet touch, low yield, no wool loss.
- ② Cleaning: Easy to do by just using a sponge with soapy water.
- ③ Easy to construct, easy to repair: paint at will, paint what I love.
- ④ No smell, excellent environmental performance, that is, brush and live.
- ⑤ No overall seam, less painting and construction troubles.
- ⑥ Thin film thickness, but very high hardness

Base surface requirements

- ① Cement mortar substrate needs to be maintained for more than 6 days, PH less than 11 degrees
- ② Neutral putty, can be directly constructed after leveling, sanding and dusting
- ③ Mortar substrate needs construction putty powder leveling and sanding, alkaline putty should be maintained for about 15 days
- ④ For the renovation of old walls, the base surface should be smooth and free of cracks, peeling, bulging, dust and oil stains.

Matters needing attention

- ① Please mix thoroughly first.
- ② Pay attention to the environmental threshold: the temperature is below 5°C and the relative humidity is more than 85%.
- ③ Please keep out of reach of children.

Scope of application

Indoor use. Almost all spaces where wallpaper and wall coverings can be applied are suitable for Leicester Cashmere. There are also many interior spaces where wallpaper and wall coverings cannot be applied, such as large wall areas and bathroom dry areas.

Technical support

Feel free to visit Manntree's official website www.manntree.co.uk to get the latest information about this product.

TOOLS



Wool Roller



Pig Hair Brush



Paint Mixer

Construction Technology

Note: Under normal circumstances, each construction interval of at least 4-6 hours



- ① Please mix "Leicester" well before use.



- ② Use Manntree prepared sanding primer (plus 30% roller coating, two times)



- ③ Add no more than 5% of water to the main material and sweep twice.



- ④ Paint the wall 1-2 times with irregular technique, without set pile



- ⑤ Completion Effect.

For more effects
Manntree group would keep exploring.

Manntree[®]
— Paint My Love —